

SUBMITTAL SHEET

JOB NAME	ITEM TAG
JOB LOCATION	PART NUMBER
CONTRACTOR	DATE
ENGINEER APPROVAL	DATE

BLUE TOP GAS BALL VALVE

T-3100

Patented one-piece forged brass body eliminates the possibility of seam leaks common to two-piece body designs.*

Equipped with an integral 1/8" NPT tapped manometer test port and plug, eliminating the need for a separate test port fitting and shutoff valve near the appliance pilot assembly.

Quarter-turn, ball-type, forged brass design is more compact and superior to traditional cast bronze or cast iron gas cocks.

The 125 psi pressure rating permits high-pressure air tests, without the grease-seal blowout common to plug-type gas cocks.

Working Pressure, Non Shock (PSI)

Cold working pressure (CWP):	125 psi
Saturated steam (WSP):	Not suitable for steam service.



Pictured:
T-3100 Sidetap
FNPT x FNPT



Pictured:
T-3100 Sidetap
Flare x Flare

MATERIAL SPECIFICATION

PART	MATERIAL
1 Body	Forged brass
2 Seats (2)	Nitrile (NBR) rubber
3 Ball	Forged brass
4 Anti-friction thrust washer	Synthetic fiber
5 Stem	Forged brass
6 Stem retainer bushing	Forged brass
7 Stem O-ring**	Nitrile (NBR) rubber***
8 Stem retainer clip	Phosphor-bronze wire
9 Handle	Coated aluminum
10 Handle screw† (1" FNPT: Handle nut)	Zinc plated steel
11 End adapter†	Forged brass
12 Test port plug	Forged brass

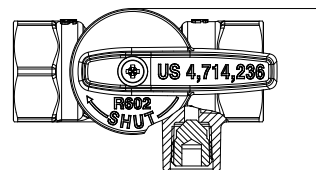
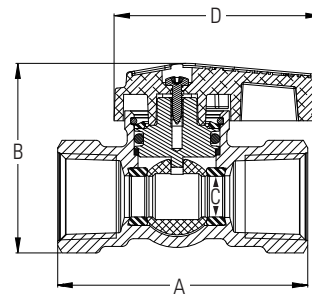
**1" FNPT: equipped with two)

*** (1" FNPT: fluoroelastomer polymer FPM); † (3/8" Flare and 1" FNPT only)

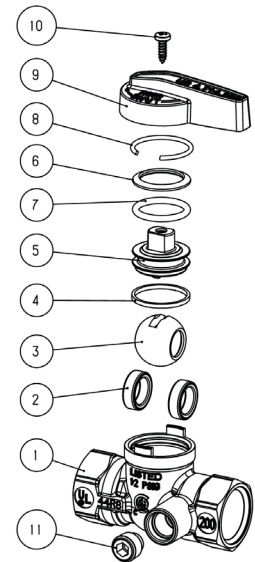
DIMENSIONS - Inch

Size	A	B	C	D	E	BTU Capacity*
1/2" FIP x FIP	2.43	1.84	0.40	2.02	1.57	290,000
3/4" FIP x FIP	2.68	2.13	0.60	2.09	1.79	726,800
1" FIP x FIP	3.13	2.72	0.84	3.71	2.08	1,192,000
3/8" Flare x Flare	2.98	1.77	0.28	2.02	1.44	102,800
1/2" Flare x Flare	2.91	1.77	0.40	2.02	1.46	109,600

*1/2 PSI NAT Gas @ 1" WC Pressure Drop



Pictured:
T-3100 1/2"
and 3/4 sizes
Cut-away



Pictured:
T-3100 1/2"
and 3/4 sizes
Exploded views

Note: 3/8" flare x flare and 1" threaded MNPT are a two-piece body design. A flared connection is not subject to the high assembly torque common to pipe-threaded connections, thereby greatly reducing the chance of body seam seal failure and subsequent leakage.

Certifications/Listings:

Third-party certified

ANSI Z21.15 / CSA 9.1: Gas appliance connector valve for ½ lb. systems.

ASME B16.44 / CGA CR91-002: For use in above ground gas piping systems up to 5 PSI.

UL MHKZ: Manual shutoff valve, 125 psi max.

UL YRPV: Gas shutoff valve, 125 psi max.

UL YSDT: LP gas shutoff valve, 125 psi max.

UL YRBX: Flammable liquid shutoff valve. 125 psi max.

UL YQNZ: Compressed gas shutoff valve, 125 psi max.

Standards:

ANSI/ASME B1.20.1: Pipe threads, general purpose, Inch.