

## SUBMITTAL SHEET

JOB NAME	ITEM TAG
JOB LOCATION	PART NUMBER
CONTRACTOR	DATE
ENGINEER APPROVAL	DATE

# ISOLATION BALL VALVE WITH ROTATING FLANGE

## T/S/P-2011RFLG

Ideal for circulator pump isolation, permitting pump removal without complete system drain-down.

Standard diamond-shaped pump flange connection rotates, to allow infinite valve positioning.

Positive-seal, blowout-proof stem features dual PTFE packing and EPDM rubber O-ring seals.

Full-port design does not affect pump flow volumes.

Flange mounting hardware included.

### Working Pressure, Non Shock (PSI)

Cold working pressure (CWP): 600 psi

Maximum service temperature: 250°F

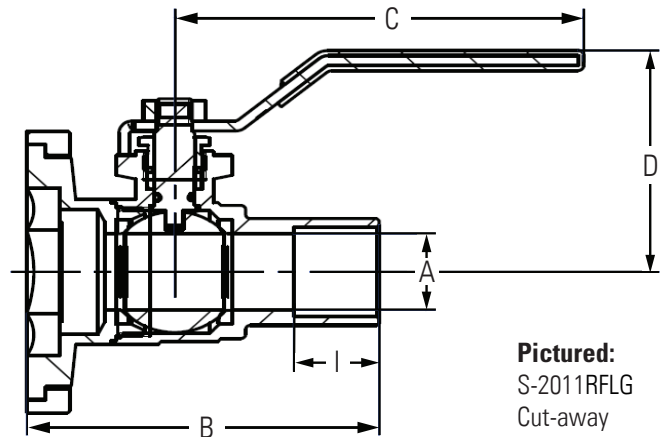
Not suitable for steam service.



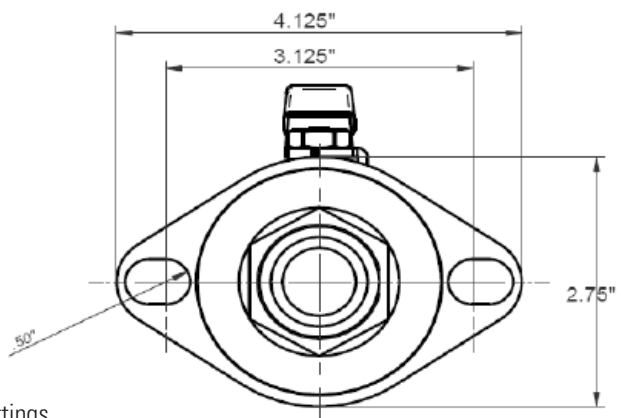
**Pictured:**  
P-2011RFLG

MATERIAL SPECIFICATION		
PART	MATERIAL	SPECIFICATION
1 Body	Forged brass	UNS Alloy C37700
2 Ball	Chrome-plated forged brass	Local brass
3 Handle & nut	Zinc plated steel	Commercial grade
4 Flange	Forged brass	Local brass
5 Flange nuts & bolts	Zinc plated steel	Commercial grade

DIMENSIONS						
Model	Size	A	B	C	D	I
T-2011	3/4"	0.75	3.03	3.62	2.16	0.63
	1"	0.97	3.39	4.13	2.48	0.79
	1-1/4"	1.18	3.66	5.41	2.95	0.79
S-2011	3/4"	0.75	3.13	3.62	2.16	0.75
	1"	0.97	3.50	4.13	2.48	0.91
	1-1/4"	1.18	3.86	5.41	2.95	0.98
P-2011	3/4"	0.75	3.50	3.62	2.16	1.18
	1"	0.97	3.74	4.13	2.48	1.18
	1-1/4"	1.18	3.98	5.41	2.95	1.18



**Pictured:**  
S-2011RFLG  
Cut-away



**Pictured:**  
Flange detail

### Standards:

ANSI/ASME B1.20.1: Pipe threads, general purpose, Inch.

ANSI/ASME B16.22: Wrought copper and copper alloy solder-joint pressure fittings.

ANSI/ASME B16.51: Copper and copper alloy press-connect pressure fittings.