

SUBMITTAL SHEET

JOB NAME		ITEM TAG	
JOB LOCATION		PART NUMBER	
CONTRACTOR	DATE		
ENGINEER APPROVAL	DATE		

SPECIALTY BALL VALVES

Model T-1002FLG/S-1002FLG

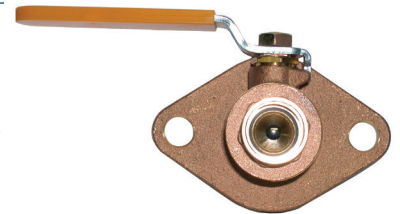
Manufactured in an ISO certified facility

Working Pressure, Non Shock (PSI)

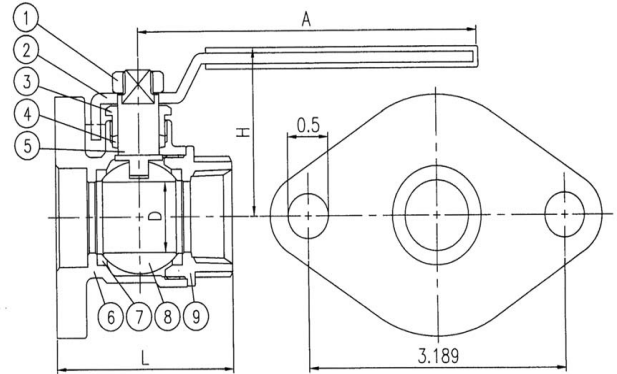
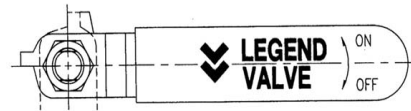
Cold working pressure (CWP): 600 CWP

Saturated steam (WSP): 150 WSP

Pictured
Model T-1002FLG/S-1002FLG



Pictured
Model T-1002FLG/S-1002FLG
Cut-away



MATERIAL SPECIFICATION

PART	MATERIAL	SPECIFICATION
1 Nut	Steel	AISI-1010
2 Handle	Steel	A283-D
3 Stem gland screw	Forged brass	ASTM B16-C36000
4 Stem packing	PTFE (teflon*)	Dupont Teflon*
5 Stem	Forged brass	ASTM B16-C36000
6 Body	Cast bronze	ASTM B584-C85700
7 Seats	PTFE (Teflon*)	Dupont Teflon*
8 Ball disc	Chrome plated forged brass	3/4" B16-C36000, 1" & 1-1/4" ASTM B124-C37700
9 End adapter	Forged Brass	ASTM B124-C37700

*Teflon is a registered trademark of Dupont

DIMENSIONS

Size	L	H	D	A
3/4"	2.421	1.850	.787	4.252
1"	2.697	2.008	.984	4.252
1 1/4"	3.051	2.401	1.260	4.882