

## SUBMITTAL SHEET

JOB NAME	ITEM TAG
JOB LOCATION	PART NUMBER
CONTRACTOR	DATE
ENGINEER APPROVAL	DATE

## PEX TUBING-TO-MANIFOLD CONNECTOR

### Tube Connector

Durable split ring compression connection applies even compression force across the PEX tubing.

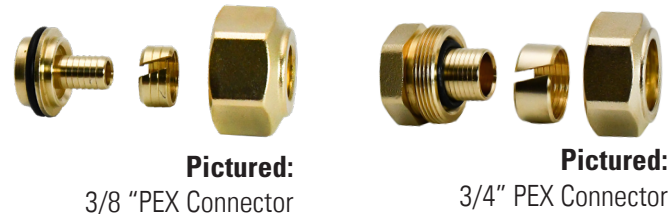
Reliable O-ring seal.

Integral insert stiffener and O-ring channel assure correct connection alignment and a positive seal.

No special tools required: a PEX tubing cutter and adjustable wrench are all that is needed.

Not for use with PEX-AL-PEX tubing.

**Working Pressure, Non Shock (PSI):** 125 psi  
**Maximum working temperature:** 230°F



### DIMENSIONS

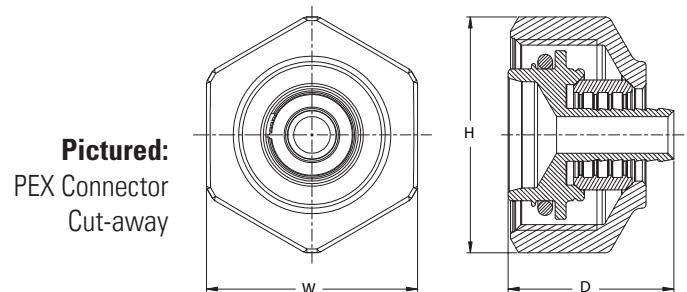
Size	For connectors that fit BRASS manifold (models M-8000 and M-8200)			For connectors that fit STAINLESS STEEL manifold (models M-8300E & M-8330)		
	W	H	D	W	H	D
5/16"	1.14	1.27	0.79	1.13	1.27	0.88
3/8"	1.14	1.27	0.79	1.13	1.27	0.88
1/2"	1.14	1.27	0.81	1.13	1.27	0.88
5/8"	1.14	1.27	0.86	1.13	1.27	0.88
3/4"	1.43	1.62	1.22	1.37	1.52	1.24

### MATERIAL SPECIFICATION

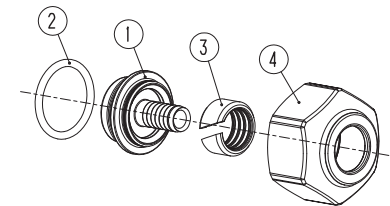
PART	MATERIAL	SPECIFICATION
1 Insert Adapter	Forged brass (M-8330 Connector: Nickel-chrome plated forged brass)	UNS Alloy C37700
2 O-ring	EPDM rubber	Commercial grade
3 Compression split-ring	Forged brass	UNS Alloy C37700
4 Compression nut	Forged brass (M-8330 Connector: Nickel-chrome plated forged brass)	UNS Alloy C37700

### Standards:

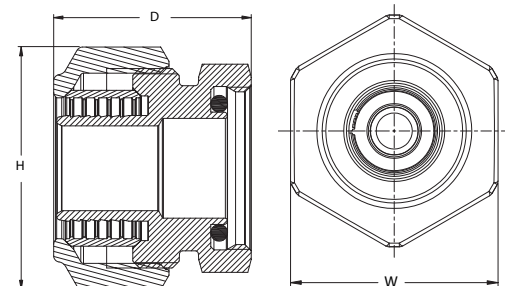
ASTM F876/F877: Standard specification for crosslinked polyethylene (PEX).  
ASTM F2623: Standard specification for Polyethylene of Raised Temperature (PE-RT) systems for non-potable water applications.



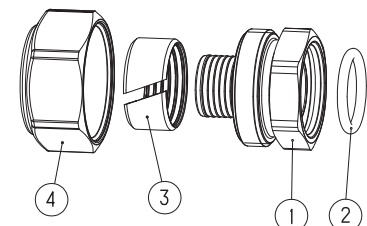
**Pictured:**  
PEX Connector  
Exploded view



**Pictured:**  
3/4"  
PEX Connector  
Cut-away



**Pictured:**  
3/4" PEX Connector  
Exploded view



## SUBMITTAL SHEET

JOB NAME	ITEM TAG
JOB LOCATION	PART NUMBER
CONTRACTOR	DATE
ENGINEER APPROVAL	DATE

## PEX-AL-PEX TUBING-TO-MANIFOLD CONNECTOR

### Tube Connector

Durable split ring compression connection applies even compression force across the PEX-AL-PEX tubing.

Reliable O-ring seal.

Integral insert stiffener and O-ring channel assure correct connection alignment and a positive seal.

No special tools required: a PEX tubing cutter and adjustable wrench are all that is needed.

Specifically for use with PEX-AL-PEX tubing.

**Working Pressure, Non Shock (PSI):** 125 psi  
**Maximum working temperature:** 230°F



**Pictured:**  
Manifold Connector  
(all sizes except 3/4")

### DIMENSIONS - Inches

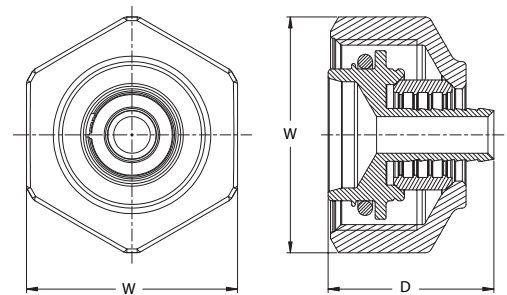
For connectors that fit BRASS manifold (models M-8000 and M-8200)				For connectors that fit STAINLESS STEEL manifold (models M-8300E & M-8330)		
Size	W	H	D	W	H	D
3/8"	—	—	—	1.13	1.27	0.88
1/2"	1.14	1.27	0.89	1.13	1.27	0.88
5/8"	1.14	1.27	0.89	1.13	1.27	0.88
3/4"	1.38	1.53	1.66	1.42	1.63	1.24

### MATERIAL SPECIFICATION

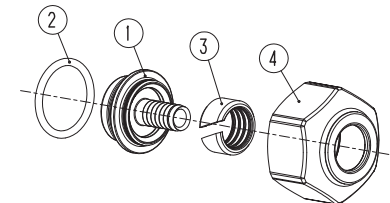
PART	MATERIAL	SPECIFICATION
1 Tubing Connector	Forged brass	UNS Alloy C37700
2 Compression split-ring	Forged brass	UNS Alloy C37700
3 Compression nut	Forged brass	UNS Alloy C37700
4 Tubing Connector o-ring	EPDM Rubber	Commercial grade
5 Tubing Barb o-ring	EPDM Rubber	Commercial grade
6 Dielectric Sleeve	PTFE - M8000/8200	Commercial grade
	EPDM - M8330	
7 Inlet Adapter*	Forged brass	UNS Alloy C37700
8 Inlet Adapter o-ring*		Commercial grade

\* 3/4" size only

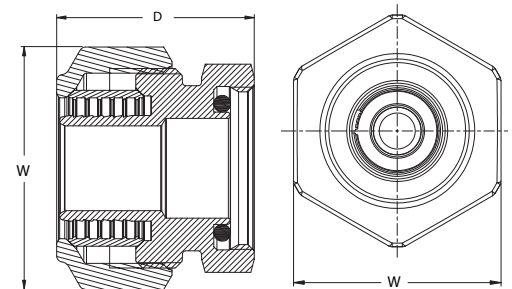
**Pictured:**  
Connector  
Cut-away



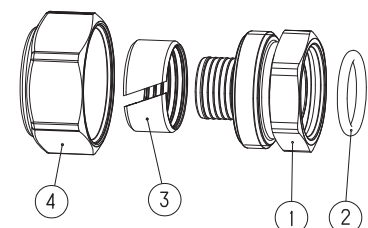
**Pictured:**  
Connector  
Exploded view



**Pictured:**  
3/4"  
Connector  
Cut-away



**Pictured:**  
3/4" Connector  
Exploded view



### Standards:

ASTM F1281: Standard specification for Crosslinked Polyethylene/Aluminum/  
Crosslinked Polyethylene (PEX-AL-PEX)

## SUBMITTAL SHEET

JOB NAME		ITEM TAG
JOB LOCATION		PART NUMBER
CONTRACTOR	DATE	
ENGINEER APPROVAL	DATE	

## COLD EXPANSION CONNECTORS

### Cold Expansion Tubing-to-Manifold Connector

For use with crosslinked polyethylene (PEX) tubing and PE-RT tubing that is compatible with ASTM F1960 fittings.

Reliable O-ring seal.

Not for use with PEX-AL-PEX tubing.

F1960 cold expansion ring is required. (Sold separately.)

**Working Pressure, Non Shock (PSI):** 125 psi  
Maximum working temperature: 230°F



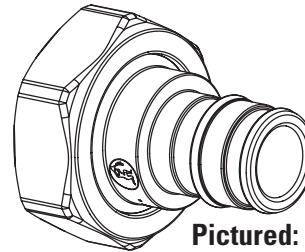
**Pictured:**  
Cold Expansion Tubing Connector

#### MATERIAL SPECIFICATION

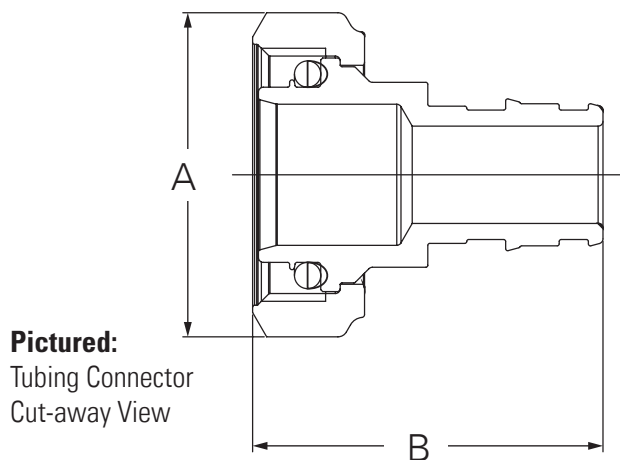
PART	MATERIAL	SPECIFICATION
1 Insert Adapter	Forged DZR brass	CW602W
2 O-ring	EPDM rubber	Commercial grade
3 Compression nut	Forged brass	UNS Alloy C37700

#### DIMENSIONS - Inch

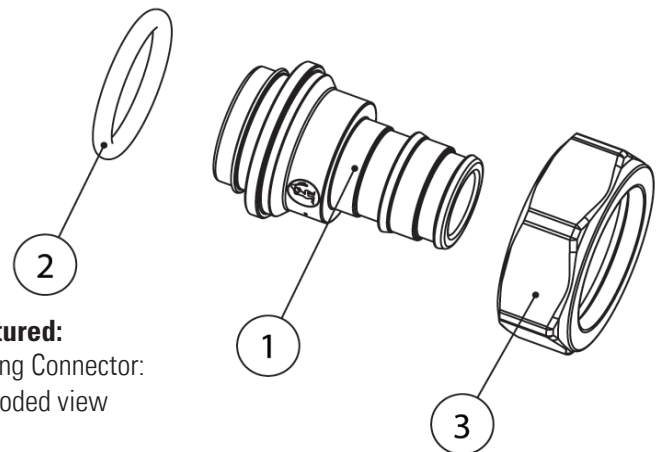
Size	W	L
1/2"	1.31	1.42
5/8"	1.31	1.57
3/4"	1.31	1.65



**Pictured:**  
Tubing Connector



**Pictured:**  
Tubing Connector  
Cut-away View



**Pictured:**  
Tubing Connector:  
Exploded view

#### Standards:

ASTM F1960: Cold Expansion fittings with PEX reinforcing rings.