

SUBMITTAL SHEET

JOB NAME	ITEM TAG
JOB LOCATION	PART NUMBER
CONTRACTOR	DATE
ENGINEER APPROVAL	DATE

LEAD-FREE FORGED STEEL DIELECTRIC UNION (2-1/2" TO 4")

T-571NL (Large Diameter)

Lead-free design is suitable for all no-lead potable water installations in full compliance of all lead-free plumbing laws.

High-strength, galvanized cast iron construction make them ideal for commercial and industrial applications.

Designed to reduce stray current and galvanic corrosion where two dissimilar metals are joined.

Self-aligning, non-conductive elastomer gasket and thermoplastic insert create a positive seal and complete isolation between the tubing and piping ends.

Optional high-temperature gaskets and inserts are available for steam and hydronic heating applications.

Available in sizes 2-1/2" to 4"* in the FIP x sweat configuration.

**Note: Sizes 1/2" to 2" are of forged steel body construction. See [T-571NL 1/2" to 2"] submittal sheet for details*

Working Pressure, Non-Shock (PSI)

Cold working pressure (CWP): 200 p.s.i. up to 180° F

Saturated steam (WSP): 60 p.s.i. up to 275° F**

***When equipped with the optional high-temperature steam gasket and insert.*

- Third-party tested and certified in compliance with U.S. Federal Public Law 111-380 (National lead-free plumbing law)

- The 4" T-571 conforms to ANSI/ASME B16.24. The 2-1/2" and 3" T-571's do not conform to this standard

- Threaded pipe end connections conform to ANSI/ASME B1.20.1

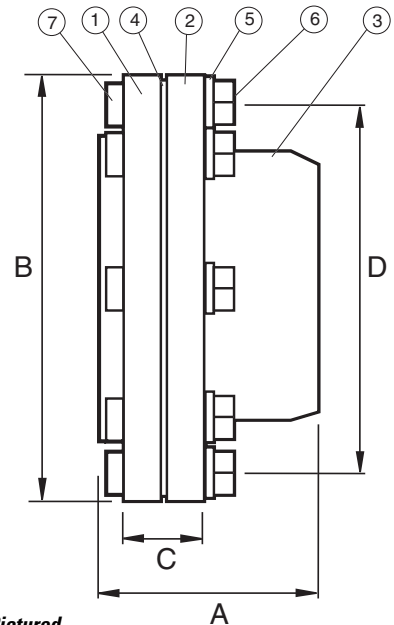
- Sweat tubing end connections conform to ANSI/ASME B16.18
- Manufactured in an ISO accredited facility



Pictured 2-1/2" - 3" Sizes



Pictured 4" Size



Pictured 4" T-571NL (Large Diameter) Cut-away

MATERIAL SPECIFICATION		
PART	MATERIAL	SPECIFICATION
1 Body: companion flange	Cast iron, galvanized	ASTM A48
2 Body: adapter flange	2-1/2" and 3": Cast iron, galvanized 4": Lead-free cast bronze, with integral solder cup	ASTM A48 JIS C6806
3 Solder adapter (2-1/2" and 3" only)	Lead-free forged brass	JIS C6806
4 Gasket	EPDM rubber **Epichlorohydrin rubber	Commercial grade Commercial grade
5 Insert insulator	ABS resin **Fiber-reinforced ABS resin	Commercial grade Commercial grade
6 Bolt	Carbon steel, galvanized	ASTM A307
7 Nut	Carbon steel, galvanized	ASTM A563

DIMENSIONS				
Size	A	B	C	D
2-1/2" FNPT x Swt	3.89	6.12	0.80	4.06
3" FNPT x Swt	3.92	6.75	0.82	5.25
4" FNPT x Swt	4.01	9.12	1.02 / 0.63***	7.50

***Bronze sweat companion flange thickness