

SUBMITTAL SHEET

JOB NAME	ITEM TAG
JOB LOCATION	PART NUMBER
CONTRACTOR	DATE
ENGINEER APPROVAL	DATE

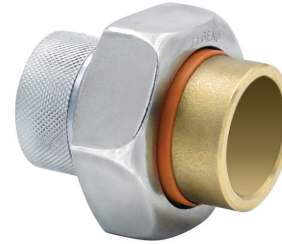
NO LEAD FORGED STEEL DIELECTRIC UNION (1/2" TO 2")

T-571NL (1/2" - 2")

Designed to reduce galvanic corrosion where two dissimilar metals are joined. Self-aligning, non-conductive elastomer gasket and thermoplastic insert create a positive seal and complete isolation between the tubing and piping ends.

High-strength, galvanized forged steel construction make them ideal for residential and commercial applications.

**Note: Sizes 2-1/2" to 4" are flange-type body construction.
See T-571NL 2-1/2" to 4" submittal sheet for details.*



Pictured:
T-571NL (1/2" - 2")

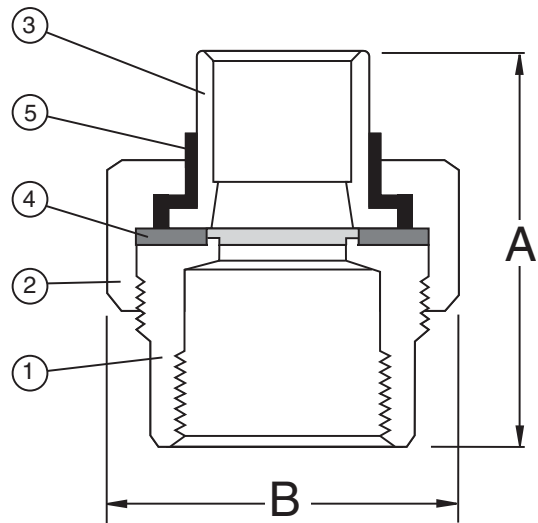
Working Pressure, Non Shock (PSI)

Cold working pressure (CWVP): 200 psi up to 180° F
 275° F or 30 psi WSP (continuous) / 300° F (intermittent)*

**When equipped with the optional Steam Gasket (not included, available separately).*

MATERIAL SPECIFICATION		
PART	PART	MATERIAL
1	Body	Forged carbon steel, galvanized
2	Union nut	Forged carbon steel, galvanized
3	Solder adapter	Lead-free forged brass
4	Gasket	EPDM rubber
5	Insert insulator	Nyloy

DIMENSIONS			
Size	A	B	
1/2" FNPT x Swt	1.84	1.44	
3/4" FNPT x Swt	2.07	1.63	
3/4" FNPT x 1/2" Swt	1.86	1.63	
1" FNPT x Swt	2.27	1.88	
1" FNPT x 3/4" Swt	2.25	2.13	
1-1/4" FNPT x Swt	2.48	2.26	
1-1/2" FNPT x Swt	2.53	2.62	
2" FNPT x Swt	2.70	3.51	
1/2" MNPT x Swt	2.75	1.44	
3/4" MNPT x Swt	2.98	1.63	
3/4" MNPT x 1/2" Swt	2.75	1.63	



Pictured
T-571NL (FNPT x Sweat)
Cut-away

Certifications/Listings:

Third-party certified.
 NSF/ANSI 372: Drinking water system components - Lead content.

Standards:

ANSI/ASME B1.20.1: Pipe threads, general purpose, Inch
 ANSI/ASME B16.22: Wrot copper and copper alloy solder-joint pressure fittings