

## SUBMITTAL SHEET

JOB NAME	ITEM TAG
JOB LOCATION	PART NUMBER
CONTRACTOR	DATE
ENGINEER APPROVAL	DATE

## STAINLESS STEEL INSERT STIFFENER FOR WATER SERVICE

### T-4500

304 Stainless steel construction

Prevents the collapse of the tubing or pipe end.

Interlocking tab design resists crushing.

Extended length permits an even sealing surface for the fitting's gasket

Dimples on the sides hold the insert stiffener in place to minimize chance of it falling out during installation.

3/4" and 1" stiffeners have one dimple. 1-1/4" to 2" stiffeners have two dimples.

Recommended on all pack-joint and ring compression water service fitting installations onto polyethylene tubing or pipe.

#### Specifications:

Manufactured in compliance with the latest version of AWWA C800, for high pressure.

#### MATERIAL SPECIFICATION

PART	MATERIAL
1 Body	304 Stainless Steel

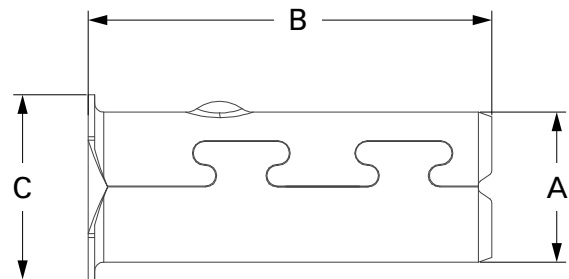
#### DIMENSIONS - INCH

Size	A	B	C	Item No.
3/4"	0.64	1.75	0.80	313-404
1"	0.83	1.77	0.97	313-405
1-1/4"	1.02	2.38	1.26	313-406
1-1/2"	1.21	2.45	1.50	313-407
2"	1.58	2.45	1.98	313-408



**Pictured:**  
T-4500 – 1" (CTS)

**Pictured:**  
T-4500 – 1-1/4" (CTS)



**Pictured:**  
T-4500 Dimensions