

## SUBMITTAL SHEET

|                   |             |
|-------------------|-------------|
| JOB NAME          | ITEM TAG    |
| JOB LOCATION      | PART NUMBER |
| CONTRACTOR        | DATE        |
| ENGINEER APPROVAL | DATE        |

# NO LEAD LARGE DIAMETER DIELECTRIC UNION

## P-571NL 2-1/2" – 4"

Press-to-connect connections are designed for installation onto ASTM B88 types K, L and M hard-drawn copper tubing.

High-strength, galvanized cast iron construction make them ideal for commercial and industrial applications.

Designed to reduce stray current and galvanic corrosion where two dissimilar metals are joined.

Approved for use in hydronic heat and chilled water with propylene glycol, up to 50%.

Can be used in compressed air distribution systems, with a maximum of 25 mg/m<sup>3</sup> of oil concentration.

Uses commercially available XL-C / CTS-V profile jaws.

Available in sizes 2-1/2" to 4" in the FIP x Press configuration.

### Working Pressure, Non Shock (PSI)

Cold working pressure (CWP): 200 PSI

Operating Range: 0 to 250°F

Saturated Steam (WSP): 15 PSI MAX

| MATERIAL SPECIFICATION |                       |                          |
|------------------------|-----------------------|--------------------------|
| Part                   | Material              |                          |
| 1                      | Grip Ring             | Spring Steel             |
| 2                      | Press O-Ring          | EPDM                     |
| 3                      | Press Adapter         | Lead-Free Forged Brass   |
| 4                      | Bolt                  | Carbon Steel, Galvanized |
| 5                      | Press Side Flange     | Cast Iron, Galvanized    |
| 6                      | Insulator Sleeve      | Nylon                    |
| 7                      | Gasket                | EPDM                     |
| 8                      | Threaded Flange       | Cast Iron, Galvanized    |
| 9                      | Nut                   | Carbon Steel, Galvanized |
| 10                     | Washer (4" Only)      | Carbon Steel, Galvanized |
| 11                     | Bolt Sleeve (4" Only) | Nylon                    |

| DIMENSIONS |       |       |                     |
|------------|-------|-------|---------------------|
| Size       | A     | B     | I (Insertion Depth) |
| 2-1/2"     | 4.58" | 6.00" | 1 - 9/16"           |
| 3"         | 4.68" | 6.62" | 1 - 3/4"            |
| 4"         | 4.68" | 9.25" | 2 - 1/8"            |

### Certifications/Listings:

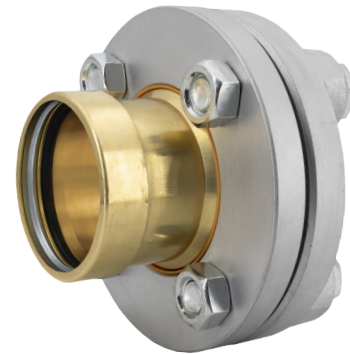
Third-party certified.

NSF/ANSI 372: Drinking water system components - Lead content.

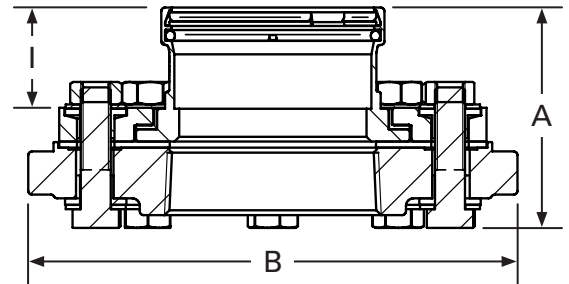
### Standards:

ANSI/ASME B1.20.1: Pipe threads, general purpose, Inch.

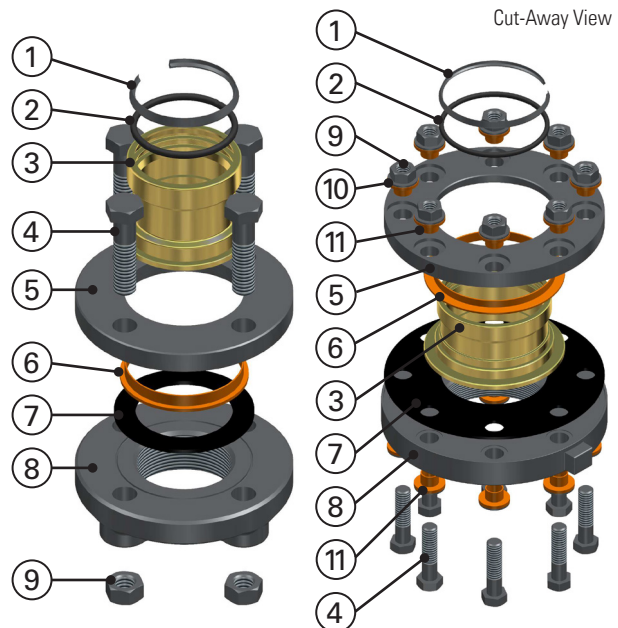
ANSI/ASME B16.51: Copper and copper alloy press-connect pressure fittings.



**Pictured**  
P-571NL



**Pictured**  
4" P-571NL  
Cut-Away View



**Pictured**  
2-1/2" & 3" P-571NL  
Exploded View

**Pictured**  
4" P-571NL  
Exploded View