

SUBMITTAL SHEET

JOB NAME		ITEM TAG
JOB LOCATION		PART NUMBER
CONTRACTOR	DATE	
ENGINEER APPROVAL	DATE	

PEX-AL-PEX TUBING-TO-MANIFOLD CONNECTOR

Tube Connector

Durable split ring compression connection applies even compression force across the PEX-AL-PEX tubing.

Reliable O-ring seal.

Integral insert stiffener and O-ring channel assure correct connection alignment and a positive seal.

No special tools required: a PEX tubing cutter and adjustable wrench are all that is needed.

Specifically for use with PEX-AL-PEX tubing.

Working Pressure, Non Shock (PSI): 125 psi
Maximum working temperature: 230°F



Pictured:
Manifold Connector
(all sizes except 3/4")

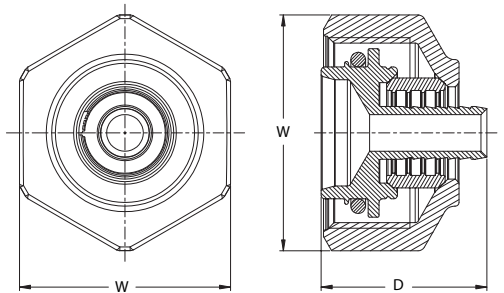
DIMENSIONS - Inches

Size	For connectors that fit BRASS manifold (models M-8000 and M-8200)			For connectors that fit STAINLESS STEEL manifold (models M-8300E & M-8330)		
	W	H	D	W	H	D
3/8"	—	—	—	1.13	1.27	0.88
1/2"	1.14	1.27	0.89	1.13	1.27	0.88
5/8"	1.14	1.27	0.89	1.13	1.27	0.88
3/4"	1.38	1.53	1.66	1.42	1.63	1.24

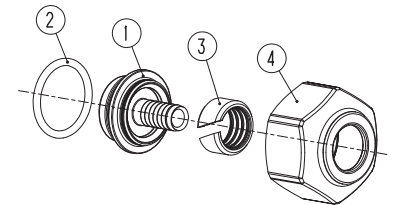
MATERIAL SPECIFICATION

PART	MATERIAL	SPECIFICATION
1 Tubing Connector	Forged brass	UNS Alloy C37700
2 Compression split-ring	Forged brass	UNS Alloy C37700
3 Compression nut	Forged brass	UNS Alloy C37700
4 Tubing Connector o-ring	EPDM Rubber	Commercial grade
5 Tubing Barb o-ring	EPDM Rubber	Commercial grade
6 Dielectric Sleeve	PTFE - M8000/8200	Commercial grade
7 Inlet Adapter*	Forged brass	UNS Alloy C37700
8 Inlet Adapter o-ring*	EPDM - M8330	Commercial grade

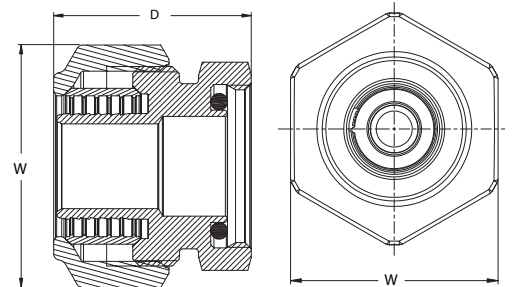
* 3/4" size only



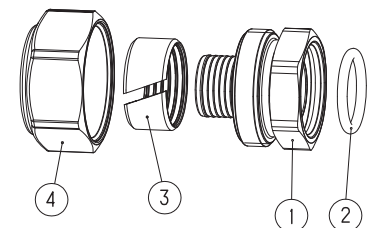
Pictured:
Connector
Cut-away



Pictured:
Connector
Exploded view



Pictured:
3/4"
Connector
Cut-away



Pictured:
3/4" Connector
Exploded view

Standards:

ASTM F1281: Standard specification for Crosslinked Polyethylene/Aluminum/
Crosslinked Polyethylene (PEX-AL-PEX)