

SUBMITTAL SHEET

JOB NAME	ITEM TAG
JOB LOCATION	PART NUMBER
CONTRACTOR	DATE
ENGINEER APPROVAL	DATE

LEAD-FREE CAST PRESSURE FITTINGS

CPVC x FNPT Three-Hole Drop-Ear Elbow

Drop-ear holes accept most screw fastener types, permitting easy attachment to cross-brackets.

Flat-back, triangulated drop-ear configuration places more of the elbow's surface against the bracket, enhancing stability when installing the shower arm.

Full-length drop-ears extend beyond the elbow's body, providing ample tool access when driving screws.

FNPT outlet is precision-cut to accommodate plated shower arms.

Not for use in a pot filler application.

Available in nominal sizes 1/2" and 3/4" tubing x FNPT configurations.

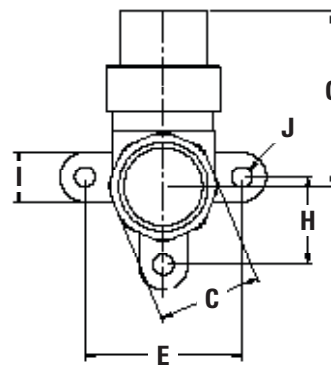
Working Pressure, Non Shock (PSI)

Cold working pressure (CWP): 125 psi

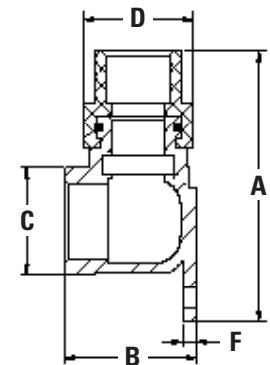
Maximum service temperature: 180°F



Pictured:
CPVC x FNPT
Drop Ear Elbow



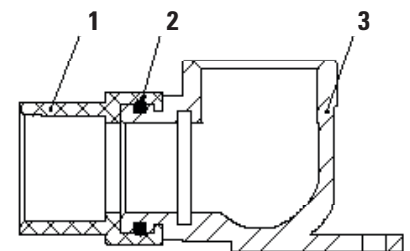
Pictured:
No-lead CPVC drop-ear elbow
Top, FNPT and drop ear view



Pictured:
No-lead CPVC drop-ear elbow
Side cut-away view

MATERIAL SPECIFICATION	
PART	MATERIAL
1 Adapter	Virgin CPVC resin
2 O-ring	Buna-N (NBR) rubber
3 Body	Lead-free cast brass

DIMENSIONS										
Size	A	B	C	D	E	F	G	H	I	J
1/2" CPVC socket x FNPT	2.65	1.30	1.04	1.08	1.50	0.14	1.67	0.84	0.47	0.098
3/4" CPVC socket x FNPT	3.12	1.58	1.28	1.27	1.89	0.14	1.98	0.95	0.47	0.098



Pictured
No-lead CPVC drop-ear elbow
Side cut-away view - material reference

Certifications/Listings:

Third-party certified.

NSF/ANSI 14: Plastic piping system components and related materials.

Standards:

ANSI/ASME B1.20.1: Pipe threads, general purpose, Inch

ASTM D2846: Chlorinated Poly (Vinyl Chloride) (CPVC) Plastic Hot and Cold Water Distribution Systems