

SUBMITTAL SHEET

JOB NAME	ITEM TAG
JOB LOCATION	PART NUMBER
CONTRACTOR	DATE
ENGINEER APPROVAL	DATE

HYDRAULIC SEPARATOR

HS-808

Union connections.

Automatic, serviceable air vent with check valve.

1/4 turn drain valve with GHT and tethered cap.

A variety of Legend Connect™ tailpiece styles are available (sold separately).

1/2" port for temperature / pressure gauge.

Insulation shell included.

Specifications:

Max Working Pressure, Non-Shock: 145 p.s.i.

Max Working Temperature: 230° F without insulation
 205° F with insulation

Insulation Shell:

- Expanded, closed cell polyurethane.
- Embossed, aluminum external coating.
- Shell thickness: 0.80 inches.
- Shell density: 2.5 lbs/ Ft³
- Coating thickness: 70 µm
- Thermal conductivity: 0.163 Btuh in. / Ft² °F.
- Maximum Temp: 205 °F
- Insulation ring thickness: 0.2 inches.

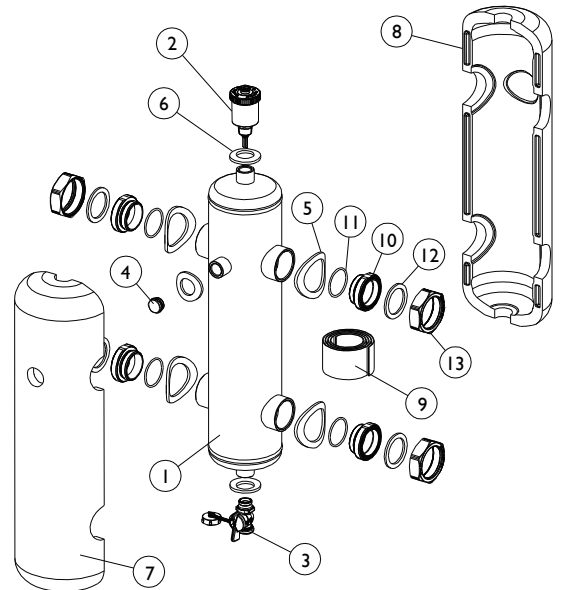


Pictured:

HS-808 w/ various LegendConnect™ tailpieces (sold separately)

MATERIAL SPECIFICATION

PART	MATERIAL	SPECIFICATION
1 Body	Steel	FE360
2 Automatic Air Vent w/ Check	Forged Brass	ASTM B124 UNS C37700
3 Drain Valve w/ GHT	Forged Brass	ASTM B124 UNS C37700
4 Temp. / Pressure Port Plug	Forged Brass	ASTM B124 UNS C37700
5 Adhesive Insulation Ring Lg (x4)	Expanded Polyethylene	-
6 Adhesive Insulation Ring Sm (x3)	Expanded Polyethylene	-
7 Insulation Shell, front	Expanded Polyurethane w/ Aluminum Coating	-
8 Insulation Shell, back	Expanded Polyurethane w/ Aluminum Coating	-
9 Insulation Tape	Aluminum	-
10 O-Ring	EPDM	Commercial grade
11 MPT body adapter	Forged Brass	ASTM B124 UNS C37700
12 Adapter gasket	EPDM	Commercial grade
13 Union nut	Forged Brass	ASTM B124 UNS C37700



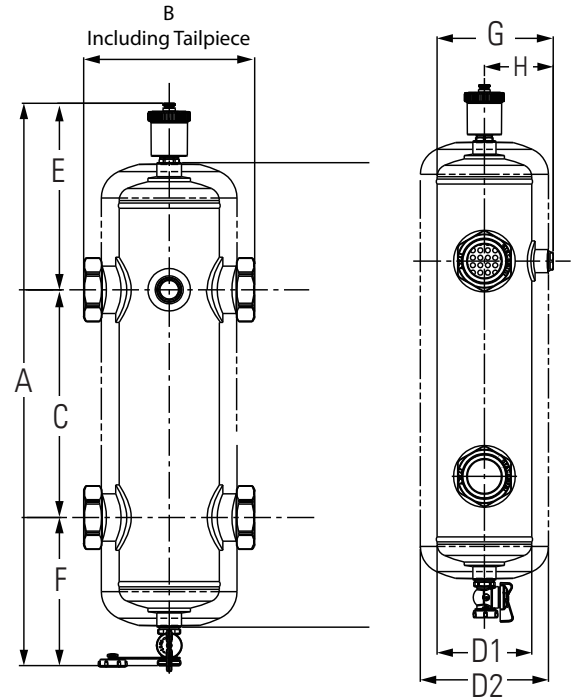
Pictured:

HS-808 Exploded View

SUBMITTAL SHEET (Page 2)

JOB NAME				ITEM TAG			
JOB LOCATION				PART NUMBER			
CONTRACTOR		DATE		CONTRACTOR		DATE	
ENGINEER APPROVAL		DATE		ENGINEER APPROVAL		DATE	

DIMENSIONS									
Size	A	B	C	D1	D2	E	F	G	H
1" MNPT	21.53	8.13	8.66	3.00	4.60	7.30	5.57	4.02	2.52
1" SWT	21.53	8.13	8.66	3.00	4.60	7.30	5.57	4.02	2.52
1" FNPT	23.30	7.65	9.45	3.50	5.10	7.79	6.06	4.53	2.78
1" Press	23.30	9.41	9.45	3.50	5.10	7.79	6.06	4.53	2.78
1" ISO Comp	23.30	9.96	9.45	3.50	5.10	7.79	6.06	4.53	2.78
1" ISO FNPT	23.30	9.65	9.45	3.50	5.10	7.79	6.06	4.53	2.78
1-1/4" MNPT	23.30	9.28	9.45	3.50	5.10	7.79	6.06	4.53	2.78
1-1/4" FNPT	23.30	10.46	9.45	3.50	5.10	7.79	6.06	4.53	2.78
1-1/4" SWT	23.30	9.28	9.45	3.50	5.10	7.79	6.06	4.53	2.78
1-1/4" ISO FNPT	23.30	10.46	9.45	3.50	5.10	7.79	6.06	4.53	2.78
1-1/2" MNPT	25.27	11.22	10.24	4.50	6.10	8.38	6.65	5.52	3.27
1-1/2" SWT	25.27	11.22	10.24	4.50	6.10	8.38	6.65	5.52	3.27


HS-808 SIZE SELECTION

To select the proper size HS-808 for the project; determine the maximum flow rate for both the primary (f1) and secondary (f2) circuits, considering each of the possible flow conditions for the system as shown in the diagrams below. Select the HS-808 connection size from the Sizing Chart below that can handle the highest of (f1) and (f2).

SIZING CHART

Connection Size	Maximum Flow Rate	Cv
1"	11 gpm	*
1-1/4"	18 gpm	*
1-1/2"	25 gpm	*
2"***	38gpm	*

*The pressure drop thru the HS-808 is so low, the Cv is not measurable.

**The 2" model does not feature the LegendConnect System. Contact Legend for additional information.

