

SUBMITTAL SHEET

JOB NAME	ITEM TAG
JOB LOCATION	PART NUMBER
CONTRACTOR	DATE
ENGINEER APPROVAL	DATE

HIGH PERFORMANCE AIR & DEBRIS ELIMINATOR

T-88

Union connections with multiple connection type options*
 Automatic, serviceable air vent with check valve
 1/4 turn drain valve with GHT and tethered cap
 Serviceable stainless steel screen
 Available in 3/4" to 1-1/2" sizes.

- *Requires adapter to connect to the system piping.
- Manufactured in an ISO accredited facility

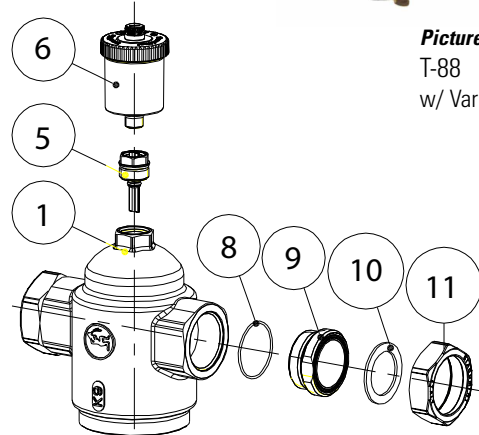


Specifications:

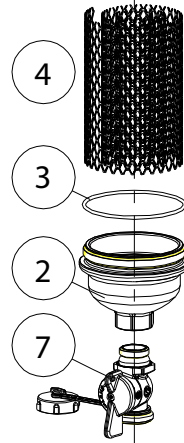
Max. Working Pressure, Non-Shock	125 p.s.i.
Max. Working Temperature	230° F

MATERIAL SPECIFICATION

PART	MATERIAL	SPECIFICATION
1 Body	Forged brass	ASTM B124 UNS C37700
2 End adapter	Forged brass	ASTM B124 UNS C37700
3 O-ring	EPDM	Commercial grade
4 Internal strainer	Stainless steel	AISI 304
5 Check valve	Forged brass (body)	ASTM B124 UNS C37700
6 Air Vent	Forged brass (body)	ASTM B124 UNS C37700
7 Drain valve w/ GHT	Forged brass (body)	ASTM B124 UNS C37700
8 O-ring (2)	EPDM	Commercial grade
9 Body adapter (2)	Forged brass	ASTM B124 UNS C37700
10 Adapter gasket (2)	EPDM	Commercial grade
11 Union nut (2)	Forged brass	ASTM B124 UNS C37700



Pictured
T-88
w/ Various Tail Pieces



Pictured
T-88
Exploded View

SUBMITTAL SHEET

JOB NAME		ITEM TAG	
JOB LOCATION		PART NUMBER	
CONTRACTOR	DATE		
ENGINEER APPROVAL	DATE		

DIMENSIONS (Inches)

Size	A	B	C	D	E
3/4" FNPT	11.80	6.50	5.29	6.52	3.07
3/4" MNPT	11.80	7.20	5.29	6.52	3.07
3/4" SWT	11.80	6.38	5.29	6.52	3.07
3/4" PRESS	11.80	8.00	5.29	6.52	3.07
3/4" ISO COMP	11.80	8.38	5.29	6.52	3.07
3/4" ISO FNPT	11.80	8.25	5.29	6.52	3.07
1" FNPT	11.80	7.50	5.29	6.52	3.07
1" MNPT	11.92	7.38	5.60	6.32	3.46
1" SWT	11.80	7.38	5.29	6.52	3.07
1" PRESS	11.92	9.25	5.60	6.32	3.46
1" ISO COMP	11.92	9.81	5.60	6.32	3.46
1" ISO FNPT	11.92	9.50	5.60	6.32	3.46
1-1/4" FNPT	11.92	10.31	5.60	6.32	3.46
1-1/4" MNPT	11.92	9.13	5.60	6.32	3.46
1-1/4" SWT	11.92	9.13	5.60	6.32	3.46
1-1/4" ISO FNPT	11.92	10.31	5.60	6.32	3.46
1-1/2" MNPT	12.13	10.00	5.50	6.63	3.50
1-1/2" SWT	12.13	10.00	5.50	6.63	3.50

