

SUBMITTAL SHEET

JOB NAME	ITEM TAG
JOB LOCATION	PART NUMBER
CONTRACTOR	DATE
ENGINEER APPROVAL	DATE

NO LEAD LARGE DIAMETER DIELECTRIC UNION

T-571NL (2-1/2" - 4")

High-strength, galvanized cast iron construction make them ideal for commercial and industrial applications.

Designed to reduce stray current and galvanic corrosion where two dissimilar metals are joined.

Self-aligning, non-conductive elastomer gasket and thermoplastic insert create a positive seal and complete isolation between the tubing and piping ends.

Optional high-temperature gaskets and inserts are available for steam and hydronic heating applications.

Available in sizes 2-1/2" to 4"* in the FIP x sweat configuration

*Note: Sizes 1/2" to 2" are of forged steel body construction. See (T-571 1/2" to 2") submittal sheet for details.

Working Pressure, Non Shock (PSI)

Cold working pressure (CWP): 200 psi up to 180° F

Saturated Steam (WSP): 30 psi up to 275° F / 300 °F (Intermittent)**

**When equipped with the optional high-temperature steam gasket and insert.

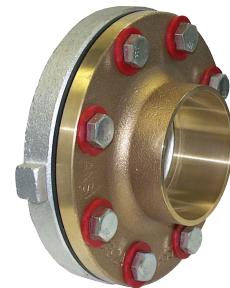
MATERIAL SPECIFICATION		
PART	MATERIAL	SPECIFICATION
1 Body (companion flange)	Cast iron, galvanized	ASTM A48
2 Body (adapter flange)	Cast iron, galvanized (2-1/2" and 3") Cast bronze with integral solder cup (4")	ASTM A48 ASTM B584 UNS C83600
3 Solder adapter (2-1/2" and 3" only)	Forged brass	ASTM B584 UNS C83600
4 Gasket	EPDM rubber	Commercial grade
5 Insert insulator	ABS resin	Commercial grade
6 Bolt	Carbon steel, galvanized	ASTM A307
7 Nut	Carbon steel, galvanized	ASTM A563

DIMENSIONS - Inch				
Size	A	B	C	D
2-1/2" FNPT x Swt	3.89	6.12	0.80	4.06
3" FNPT x Swt	3.92	6.75	0.82	5.25
4" FNPT x Swt	4.01	9.12	1.02 / 0.63†	7.50

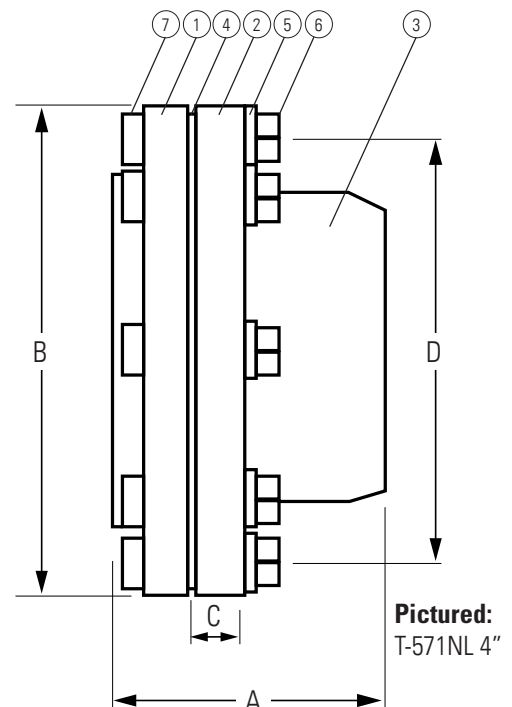
†Bronze sweat companion flange thickness (4" only).



Pictured:
T-571NL (2-1/2" - 3")



Pictured:
T-571NL (4")



Pictured:
T-571NL 4"

Certifications/Listings:

Third-party certified.

NSF/ANSI 372: Drinking water system components - Lead content.

Standards:

ANSI/ASME B1.20.1: Pipe threads, general purpose, Inch

ANSI/ASME B16.18: Wrot copper and copper alloy solder-joint pressure fittings

ANSI/ASME B16.24: Bronze Class 150 flanges (4" only).