

SUBMITTAL SHEET

JOB NAME	ITEM TAG
JOB LOCATION	PART NUMBER
CONTRACTOR	DATE
ENGINEER APPROVAL	DATE

FULL PORT ROTATING FLANGE ISOLATION BALL VALVE

T/S/P-2012RFLG

Ideal for circulator pump isolation, permitting pump removal without complete system drain-down.

Standard diamond-shaped pump flange connection rotates to allow infinite valve positioning.

Integrated drain valve with a tethered cap that permits filling, purging and flushing operations.

Positive-seal, blowout-proof stem features dual PTFE packing and EPDM rubber O-ring seals.

Durable forged brass construction, full-port design does not affect pump flow volumes.

Flange mounting hardware included.

Working Pressure, Non Shock (PSI)

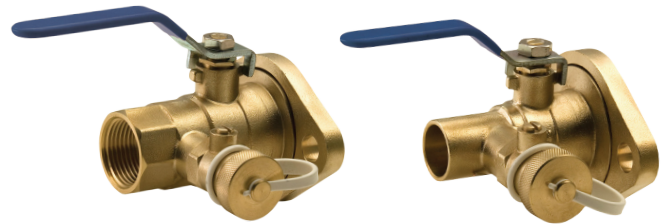
Cold working pressure (CWP):	600 psi
Maximum Service temperature:	250°F
Saturated steam (WSP):	Not suitable for steam service

MATERIAL SPECIFICATION		
PART	MATERIAL	SPECIFICATION
1 Body	Forged brass	UNS Alloy C37700
2 Ball	Chrome-plated forged brass	Local brass
3 Purge Valve Body	Forged brass	Local brass
4 Valve handle & nut	Zinc-plated steel	Commercial grade
5 Flange	Forged brass	Local brass
6 Flange nuts & bolts*	Zinc-plated steel	Commercial grade

DIMENSIONS - Inch						
Model	Size	A	B	C	D	I
T-2012	3/4"	0.75	3.03	3.62	2.16	0.63
	1"	0.97	3.39	4.13	2.48	0.79
	1-1/4"	1.18	3.66	5.41	2.95	0.79
S-2012	3/4"	0.75	3.13	3.62	2.16	0.75
	1"	0.97	3.50	4.13	2.48	0.91
	1-1/4"	1.18	3.86	5.41	2.95	0.98
P-2012	3/4"	0.75	3.50	3.62	2.16	1.18
	1"	0.97	3.74	4.13	2.48	1.18
	1-1/4"	1.18	3.98	5.41	2.95	1.18

Standards:

- ANSI/ASME B1.20.1: Pipe threads, general purpose, Inch
- ANSI/ASME B16.22: Wrought copper and copper alloy solder-joint pressure fittings
- ANSI/ASME B16.51: Copper and copper alloy press-connect pressure fittings
- ANSI/ASME B1.20.7: Hose coupling screw threads, Inch



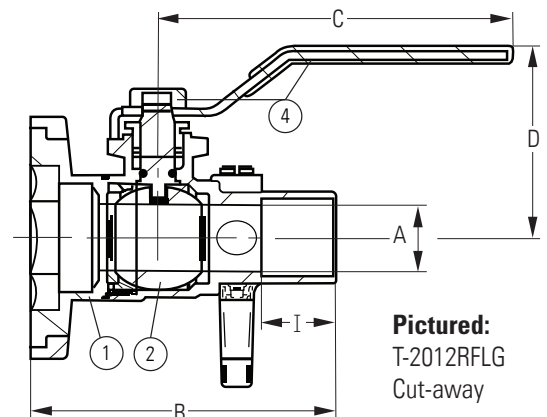
Pictured: T-2012RFLG



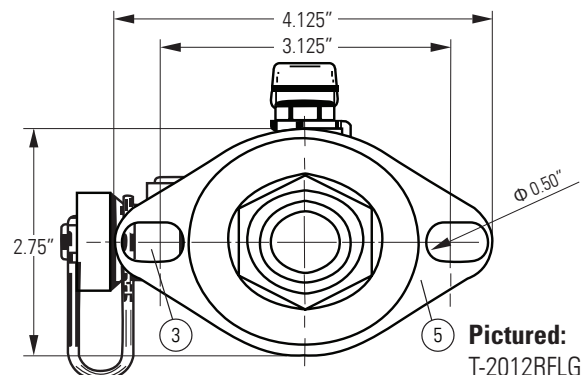
Pictured: S-2012RFLG



Pictured: P-2012RFLG



Pictured: T-2012RFLG Cut-away



Pictured: T-2012RFLG Flange detail view

*Not Pictured: (6) - Flange nuts & bolts