

## SUBMITTAL SHEET

JOB NAME	ITEM TAG
JOB LOCATION	PART NUMBER
CONTRACTOR	DATE
ENGINEER APPROVAL	DATE

# FLANGED DUCTILE IRON Y-STRAINER

## T-19

High-strength ductile iron construction resists distortion from pipeline stresses.

A larger straining area provides more effective single-pass filtration and debris entrapment, enhancing downstream component protection with minimal pressure drop.

Uni-directional flow. Can be installed horizontally or vertically, where the screen cap must be positioned downward. In the vertical position, the media must flow downward.

Gasketed strainer cap is bolted to the body, for easy removal and servicing of the perforated strainer.

All sizes are furnished with a square-head closure (blow-off) plug that is tightened in-place, making the strainer ready for service.

Available in nominal sizes 2" to 8"

### Working Pressure, Non Shock (PSI)

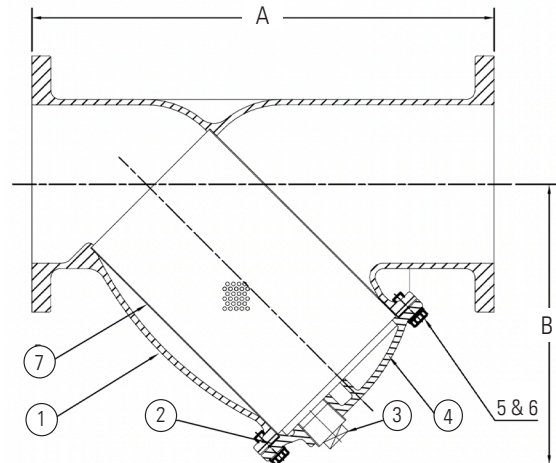
Cold working pressure (CWP): 200 psi  
Saturated steam (WSP): 125 psi to 340° F

### Strainer Type

2" to 4" Cylindrical, 1/16" diameter-round-perforation sheet steel  
5" to 8" Cylindrical, 1/8" diameter round-perforation sheet steel



**Pictured:**  
T-19



**Pictured:**  
T-19  
Cut-away

### MATERIAL SPECIFICATION

PART	MATERIAL	SPECIFICATION
1 Body	Ductile iron	ASTM A536 Grade 65-45-12
2 Cap gasket	Graphite	Commercial grade
3 Closure (blowoff) plug	Ductile iron	ASTM A536 Grade 65-45-12
4 Cap	Ductile iron	ASTM A536 Grade 65-45-12
5 Cap bolt	Carbon steel	ASTM F568M Grade 4.8
6 Washer	Carbon steel	Commercial grade
7 Perforated strainer	Stainless steel	AISI Grade 304

### DIMENSIONS

Size	A	B	C (NPT)
2"	9.06	5.91	1/2"
2-1/2"	11.42	7.09	1"
3"	12.21	7.68	1"
4"	13.78	9.45	1"
5"	15.75	10.43	1-1/4"
6"	18.90	12.21	1-1/2"
8"	23.62	14.17	1-1/2"

### CLASS 125 / 150 FLANGE DATA

Nominal size	Bolt circle diameter	Bolt size	Number of bolt holes	Flange diameter
2"	4.75	5/8" - 11	4	6"
2-1/2"	5.5	5/8" - 11	4	7"
3"	6	5/8" - 11	4	7.50"
4"	7.5	5/8" - 11	8	9"
5"	8.5	3/4" - 10	8	10"
6"	9.5	3/4" - 10	8	11"
8"	11.75	3/4" - 10	8	13.50"

### Standards:

ANSI/ASME B16.1: Cast iron pipe flanges and flanged fittings, Class 125 / 150