

SUBMITTAL SHEET

JOB NAME		ITEM TAG
JOB LOCATION		PART NUMBER
CONTRACTOR	DATE	
ENGINEER APPROVAL	DATE	

Stainless Steel Drop Ear Elbow

304 Stainless Steel

Naturally lead-free.

Drop-ear holes accept most screw fastener types, permitting easy attachment to cross-brackets.

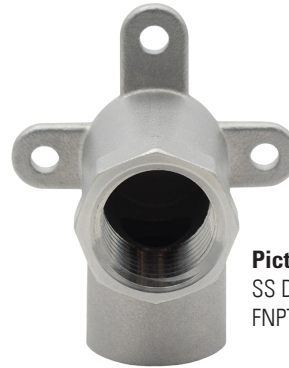
Integral drop-ears and flat-back elbow shape, place more of the elbow's surface against the bracket, enhancing stability.

Ideal for high-stress applications requiring requiring more stability and strength.

Working Pressure, Non Shock (PSI)

Cold working pressure (CWP): 125 psi

Saturated steam (WSP): Not suitable for steam service



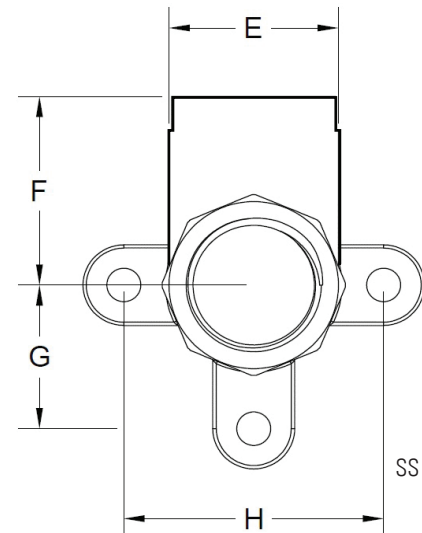
Pictured:
SS Drop Ear Elbow
FNPT x FNPT

MATERIAL SPECIFICATION

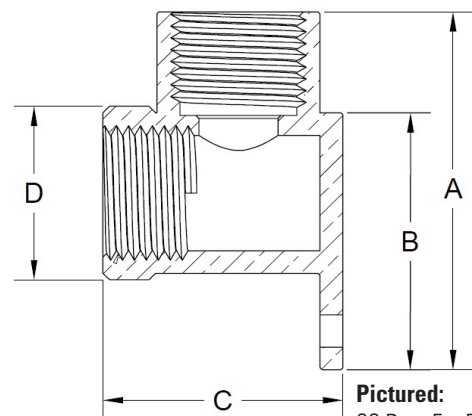
PART	MATERIAL	SPECIFICATION
1 Fitting body	Stainless steel	AISI grade 304

DIMENSIONS

SIZE	A	B	C	D	E	F	G	H
1/2" FNPT x 1/2" FNPT	2.18	1.56	1.44	1.06	0.94	1.10	0.83	1.50



Pictured:
SS Drop Ear Elbow
FNPT x FNPT
Top view



Pictured:
SS Drop Ear Elbow
FNPT x FNPT
Cut-away view

Certifications/Listings:

Third-party certified

NSF/ANSI 61: Drinking water system components - Health effects.

Standards:

ANSI/ASME B1.20.1: Pipe threads, general purpose, Inch.