

SUBMITTAL SHEET

JOB NAME		ITEM TAG
JOB LOCATION		PART NUMBER
CONTRACTOR	DATE	
ENGINEER APPROVAL	DATE	

CPVC COMPACT-PATTERN BALL VALVE FOR CPVC SCHEDULE 80 PIPE

S-607

Constructed of heavy-duty, corrosion-proof, virgin CPVC resin. PTFE seats and EPDM stem O-ring assure maintenance-free operation and maximum service life. Compact-pattern molded-in-place light-grey-colored body and one-piece ball-stem design, provide exceptional resistance to wear and to pipeline stress distortion. Designed and certified for installation onto Schedule 80 CPVC pipe, potable hot and cold water plumbing, commercial plumbing, chemical processing, deionized water and many other applications. Not suitable for use with petroleum-based medias or compressed-air service. Solvent-weld end connection types available in Nominal Pipe Sizes 1/2" to 2".

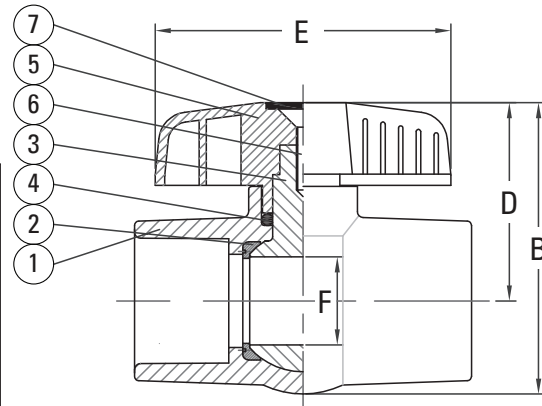


Pictured:
S-607

Working Pressure, Non Shock (PSI)

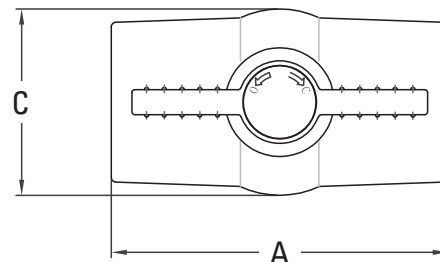
Cold Working Pressure (CWP): 150 psi @ 73°F
Working Steam Pressure (WSP): Not suitable for steam service
Maximum service temperature: 180°F

MATERIAL SPECIFICATION		
PART	MATERIAL	SPECIFICATION
1 One-piece body	CPVC resin	ASTM D1784, Class 23447
2 Seats (2)	PTFE elastomer	Commercial grade
3 One-piece ball-stem	CPVC resin	ASTM D1784, Class 23447
4 Stem O-ring	EPDM elastomer	Commercial grade
5 Handle	ABS resin	Impact grade
6 Handle Retaining Screw	Zinc-plated steel	ASME B18.6.7M
7 Screw cover	ABS resin	Impact grade



Pictured:
S-607, 1/2" - 2"
Cut-away view

DIMENSIONS - Inch						
Nominal IPS	A	B	C	D	E	F
1/2"	3.27	2.50	1.46	1.77	2.76	0.55
3/4"	3.78	3.09	1.93	2.13	3.46	0.79
1"	4.21	3.72	2.24	2.60	3.94	0.98
1-1/4"	4.49	3.88	2.48	2.64	3.94	1.18
1-1/2"	5.12	4.47	2.95	2.99	4.29	1.42
2"	5.75	5.31	3.62	3.50	5.28	1.83



Pictured:
S-607, 1/2" - 2"
Top view

Certifications/Listings:

Third-party Certified
NSF/ANSI 61: Drinking water system components - Health effects.
NSF/ANSI 14: Plastic Piping System Components and Related Materials
NSF/ANSI 372: Drinking water system components - Lead content

Standards:

ASTM F1970: Standard Specification for Special Engineered Fittings, Appurtenances or Valves for use in Poly (Vinyl Chloride) (PVC) or Chlorinated Poly (Vinyl Chloride) (CPVC) Systems.
ASTM D2846: Standard Specification for Chlorinated Poly(Vinyl Chloride) (CPVC) Plastic Hot- and Cold-Water Distribution Systems.
ASTM D1784: Standard Specification for Rigid Poly (Vinyl Chloride) (PVC) Compounds and Chlorinated Poly (Vinyl Chloride) (CPVC) Compounds.