

## SUBMITTAL SHEET

JOB NAME	ITEM TAG
JOB LOCATION	PART NUMBER
CONTRACTOR	DATE
ENGINEER APPROVAL	DATE

## PLASTIC PEX TUBING FITTINGS

### Multi-Port Tee-1960 Cold Expansion

These fittings are intended for use in cold- and hot-water distribution (potable) systems.

An ideal high-strength corrosion-free alternative to metallic fittings.

Cold expansion barbed end connections are designed for use with PEX tubing that conforms to ASTM F 1960.

Designed for use with PEX reinforcing rings in compliance with ASTM F 1960.

Manufactured in an ISO accredited facility.

Available with 3/4" system size connections.

#### Working Pressure, Non-shock (PSI)

100 psi @ 180°F



Pictured:  
1960 PEX Multi-Port  
Closed Tee

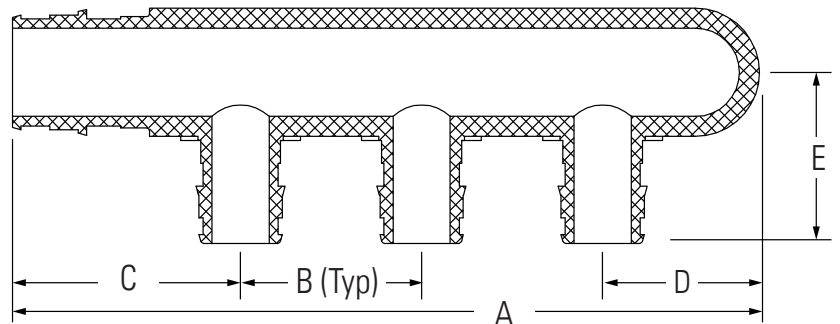


Pictured:  
1960 PEX Multi-Port  
Open Tee

#### DIMENSIONS

Size	A	B	C	D	E
<b>Closed Tee</b>					
3/4" x 3-port	5.16	1.25	1.57	1.08	1.18
3/4" x 4-port	6.41	1.25	1.57	1.08	1.18
3/4" X 6-port	8.91	1.25	1.57	1.08	1.18
<b>Open Tee</b>					
3/4" x 2-port	4.40	1.25	1.57	1.57	1.18
3/4" x 3-port	5.65	1.25	1.57	1.57	1.18
3/4" x 4-port	7.65	1.25	1.57	1.57	1.18

All port connections are 1/2"



Pictured:  
1960 PEX Multi-Port  
Closed Tee

#### MATERIAL SPECIFICATION

PART	MATERIAL	SPECIFICATION
1	All plastic PEX fitting configurations	Modified Polyphenylsulfone ASTM D6394

#### Third-party tested and certified to the following standards:

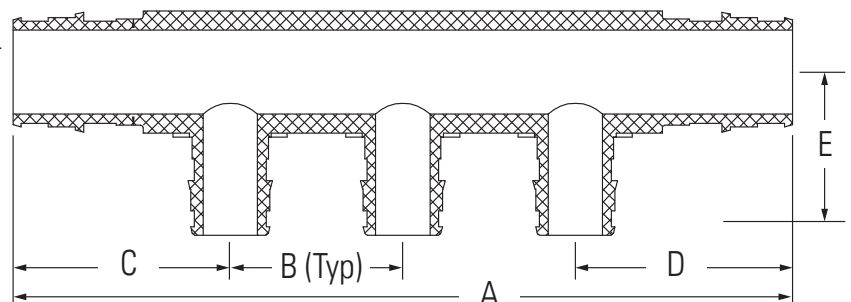
ANSI/NSF 14: Plastic Piping System Components and Related Materials.

ANSI/NSF 61: Drinking water system components health effects.

ASTM D6396: Standard Specification for Sulfone Plastic Resin.

ASTM F1960: Cold expansion fittings with PEX reinforcing rings.

CSA C137.5: Thermoplastic Pressure Piping Compendium.



Pictured:  
1960 PEX Multi-Port  
Open Tee